



EXCALIBUR

TRUCK ACCESSORIES

2009-19 DODGE RAM 2500/3500

RUNNING BOARD INSTALLATION GUIDE

EXCALIBUR TRUCK ACCESSORIES
108 FISHER ST OKOTOKS AB

TECH SUPPORT 1 (403) 995 1818

TECH@EXCALIBURTRUCK.NET
SALES@EXCALIBURTRUCK.NET

**IF YOU HAVE ANY
QUESTIONS PLEASE GIVE US A CALL.**

**PROUDLY
CANADIAN**



**2500 /
3500**

DODGE 2009 - 2019
EXCALIBURTRUCK.CA

TOOLS REQUIRED

10mm Socket or Combination Wrench

18mm Socket with 24" extension.

Breaker bar.

Box cutter or sharp knife

OPTIONAL: Wax based under coating to cover brackets and hardware at the end of the install.

NOTE : A POWER DRILL OR POWER DRIVE WILL SPEED UP THE INSTALLATION. **PLEASE NOTE: IF POWER TOOLS ARE USED, TAKE CARE TO ENSURE NOT TO STRIP OR OVER TIGHTEN THE HARDWARE.**

PARTS LIST

QTY	DESCRIPTION
2	Running Boards
2	Mudguards
1	Cab Bracket Kit
1	Rear Bracket Kit
1	Light Kit (if applicable)



1. ASSEMBLE THE RUNNING BOARDS.

Install the mud guards on the running boards prior to installation.

Locate and identify the left and right mud guard.



2. PUSH THE MUD GUARDS ON TO THE RUNNING BOARDS

Push the mud guards on to the running boards until they bottom out and secure using the hardware located at the rear of the running board.



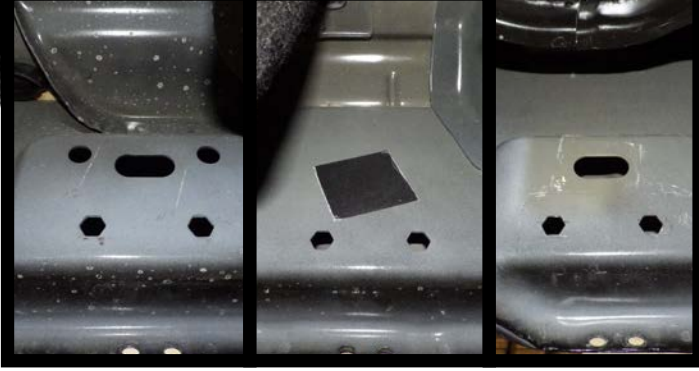
3. SECURE RUBBER FILLER STRIP TO THE MUD GUARDS.

Using the pre installed SS self taper secure the rubber filler strip to the mudguards.



4. SACRIFICIAL CARDBOARD

We have installed a sacrificial piece of cardboard on the mudguards. The intention is to prevent scratches during install. Leave this in place until the installation is complete and you are ready to secure the mudguards.



1. LOCATE CAB BRACKET MOUNTING LOCATIONS.

Located on the sill of the vehicle there will be three factory mounting locations.

remove the tape covering the opening in the center of the sill mounts.

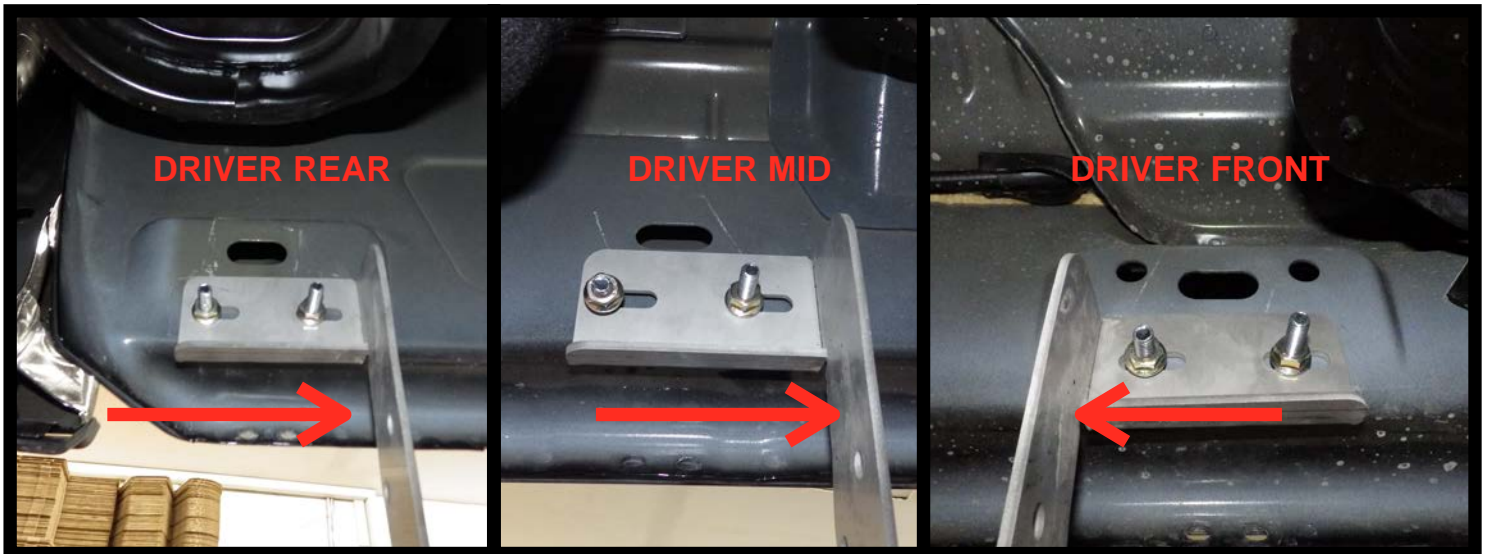


2. INSTALL MOUNTING HARDWARE.

Using the supplied "feeder tube", located in the hardware package included with the cab brackets, insert the supplied 12 "elevator" bolts into the factory mounting locations.

Use caution not to drop one of the elevator bolts into the sill of the truck.

TIP: WHEN INSERTING THE ELEVATOR BOLTS IN THE CENTER MOUNTING LOCATION TWISTING THE TUBE 180 DEGREES LEFT AND RIGHT WILL HELP POSITION THE BOLT.



3. POSITION THE CAB BRACKETS FRONT TO REAR.

With all the hardware installed secure the cab brackets to the vehicle in the orientation shown above.

The passenger side will be a mirror image to the driver side.

NOTE: SNUG THE BOLT SECURING THE BRACKETS BUT KEEP THE HARDWARE LOOSE ENOUGH THE BRACKET CAN STILL BE MOVED LEFT AND RIGHT.

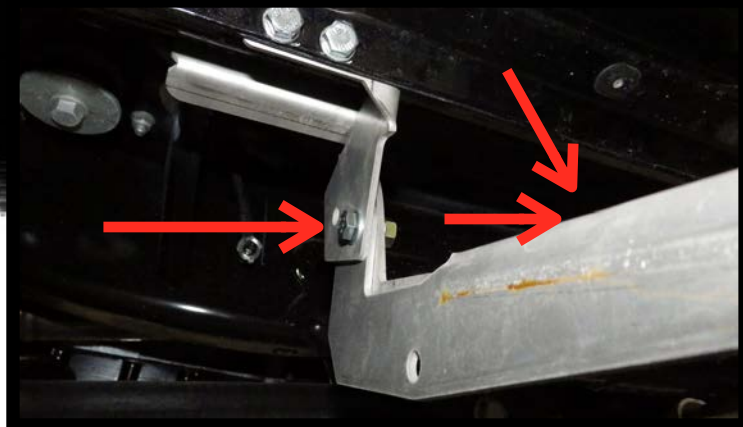


4. MOUNT THE CAB BRACKET SUPPORT

Using the supplied M8 Bolt and flat washer insert the bolt from the outside of the vehicle towards the inside of the vehicle through the factory bolt locations shown above.

There are left and right hand supports.

If the vehicle is an older model these holes will have to be drilled at this time. Use the cab bracket support as a guide.



5. (A) ADD THE BASE BRACKETS.

NOTE: THE IF THE CAB BRACKETS ARE CORRECTLY INSTALLED THE FRONT BRACKETS WILL BE DIFFERENT FROM THE REST OF THE REAR BRACKETS.

With the cab bracket supports mounted, add the base brackets. To correctly place the brackets have the tab with the slotted holes facing towards the rear of the truck as shown in the picture above.

When adding the base brackets use the middle hole in the bracket set. However, do not tighten and allow the bracket to pivot down and touch the cab bracket.



5. (B) BASE BRACKET

When adding the base brackets use the middle hole in the bracket set. However, do not tighten and allow the bracket to pivot down and touch the cab bracket.

The base bracket was designed to pivot here to aid in the placement of the running board on the brackets and the placement of the rubber seal.

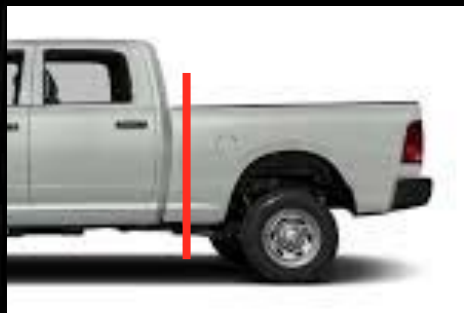
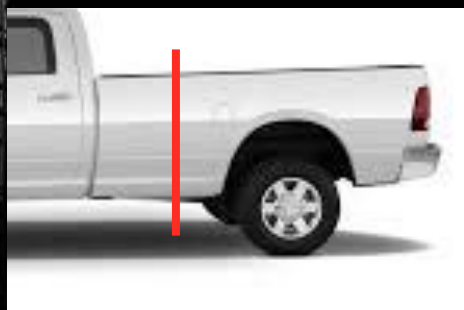


6. TIGHTEN THE CAB SECTION OF THE BRACKET.

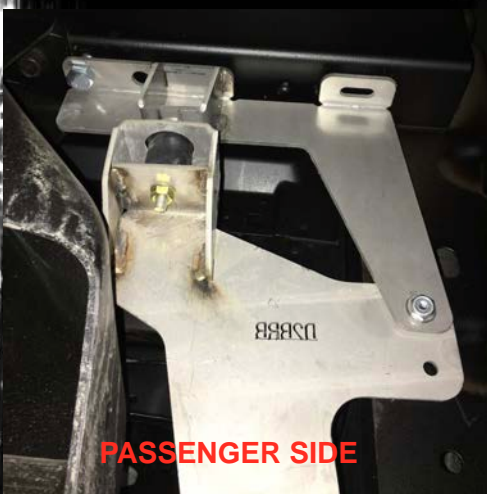
With the base brackets correctly placed tighten the cab brackets. Ensure the brackets are straight and well aligned before tightening. Tighten the base bracket support first.

NOTE: DUE TO THE PLAY IN THE FACTORY MOUNTING LOCATIONS THERE MAY BE A CHANCE THE BRACKETS ARE MOUNTED AT DIFFERENT HEIGHTS. TAKE A MOMENT TO LOOK DOWN THE SIDE OF THE TRUCK TO SEE IF ALL BRACKETS ARE ALIGNED.

**REAR BRACKET
CROSSMEMBER LOCATIONS
FOR 8.0 BED AND 6.6 BED.**



The Patented Rear Flex Bracket has been designed to flex with the box of the vehicle and provide the necessary support for the 3rd step.



QTY	DESCRIPTION
1	PRE ASSEMBLED DRIVER SIDE BRACKET
1	PRE ASSEMBLED PASSENGER SIDE

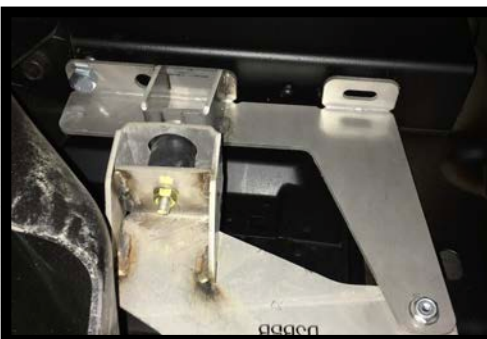
6.6, 8.0 SINGLE REAR WHEEL REAR BRACKET INSTALLATION.



1. LOCATE THE MOUNTING LOCATIONS FOR THE REAR BRACKETS.

The rear bracket will be mounted to the factory provided M12 threaded holes (shown on the left) and a 10 mm drilled hole.

See the image on the left.



2. MOUNT THE REAR BRACKET TOP MOUNT.

Using the supplied M12x30 bolts supplied with the rear brackets, mount the rear brackets to the box crossmember.

On the passenger side the bracket can be mounted fully assembled. On the drivers side, if the vehicle is diesel, the top section will have to be mounted first to accommodate the DPF lines.



3. DRILL THE OUTER SUPPORT HOLES.

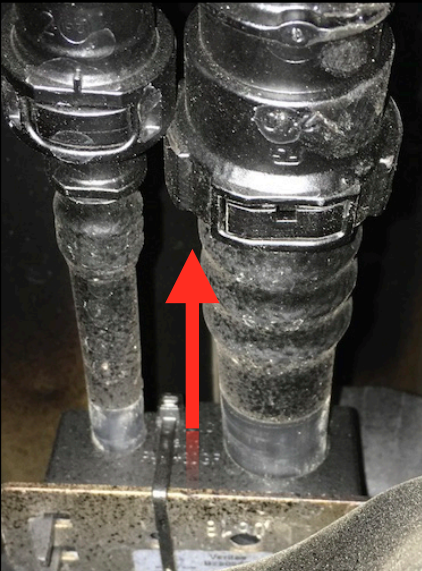
With the bracket mocked up in position, use a marker, pilot drill or a marking device to mark out the position for the outer support bolts. Drill a 10mm (3/8) hole in the crossmember on both driver and passenger sides.



4. INSTALL THE OUTER SUPPORT BLIND BOLTS.

Using the supplied feeder tube pull the blind fasteners into the drilled holes.

6.6, 8.0 SINGLE REAR WHEEL REAR BRACKET INSTALLATION CONT.



TIP: ON VEHICLES WITH A DEISEL ENGINE, PULL THE DPF LINES OUTWARD WHERE THEY ARE MOUNTED TO THE FRAME. THE LINES WILL SLIDE OUTWARD GIVING YOU EXTRA CLEARANCE THROUGH THE REAR BRACKET. (SEE BELOW PICTURE)



ENSURE THERE IS NO RUBBING BETWEEN THE BRACKET AND DPF LINES.



5. SECURE THE FRONT OF THE BRACKETS.

Re align the passenger bracket and thread the supplied M8 flanged nuts onto the blind fastener.



6. INSTALL THE BLIND FASTENER ON THE DRIVER SIDE

It is not required to use the feeder tube on the driver side as the box crossmember is shorter. With the fastener in place tread the M8 flanged nut onto the bolt.



7. TIGHTEN THE REAR BRACKET HARDWARE

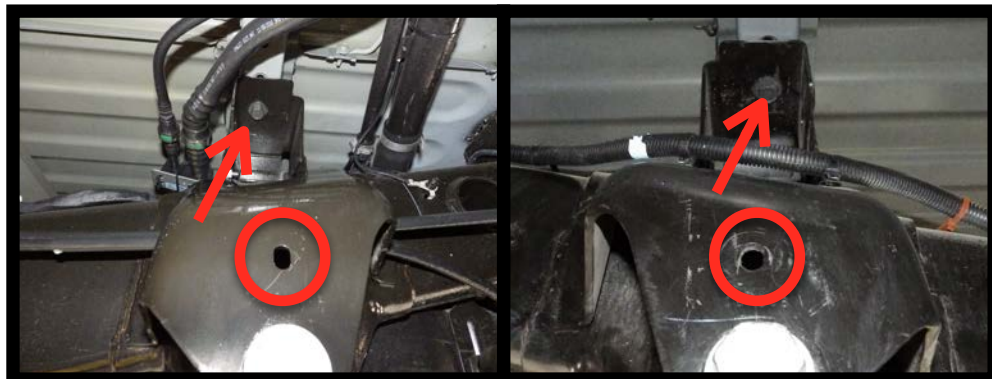
TIP: When tightening the blind fasteners pull down on the bracket to apply some tension on the bolt. This will help prevent the body of the blind faster from turning while tightening.

8. ENSURE ALL HARDWARE IS TIGHT THEN PROCEED TO STEP 7 OF BOARD INSTALL.

Ensure all the hardware is tight.

The pivot point of the bracket must be secured with a nylock nut as any movement here will loosen a flange nut. (as shown in the picture)

8.0 DUALY REAR BRACKET INSTALLATION.



1. LOCATE THE REAR BRACKET MOUNTING LOCATIONS.

Using the above picture for reference, locate the mounting location for the driver side and passenger rear brackets.



2. ON DRIVER AND PASSENGER SIDE MOUNT THE UPPER SUPPORT BRACKET.

Using a 18mm socket on a 24" extension remove the factory box mount bolt and secure the upper support bracket.

**NOTE: THE UPPER SUPPORT
BRACKET SHOULD BE TOWARDS THE
REAR OF THE TRUCK.**



3. MOUNT THE RUBBER FLEX JOINT TO THE LEAF SPRING MOUNT.

Using either your hand or a box end wrench thread a supplied M8 flange nut to the back of the rubber flex joint as shown in the picture on the left. This should be left loose until the installation is complete. This can be done on driver and passenger side.



4. INSTALL THE REAR BRACKETS.

Position the rear bracket over the rubber flex joint and secure using a supplied M8 flange nut.

**NOTE: THE BRACKET IS DESIGNED TO
HAVE A GAP BETWEEN THE BRACKET
AND THE CHASSIS AS SHOWN IN THE
PICTURE ON THE LEFT.**



5. BOLT THE REAR BRACKET TO THE TOP MOUNT.

Using the supplied M8X20 bolts, flat washers and M8 Nyloc nuts tighten the bracket against the top mount.

NOTE: THIS BOLT MUST BE SECURED USING A NYLOC NUT AS ANY MINOR MOVEMENT HERE WILL LOOSEN A FLANGE NUT.

Once complete, fully tighten all the hardware on the rear brackets and continue to the base bracket install.



6. INSTALLING THE BASE BRACKET ON DUAL REAR BRACKETS.

Due to the the way the kickout pivots, it is more convenient to attach the base bracket after the running board is pivoted into place.

REAR BRACKET INSTALLATION IS NOW COMPLETE. CONTINUE WITH THE RUNNING BOARD INSTALLATION.



7. PLACE THE RUNNING BOARD ON THE BRACKETS.

With the rear bracket install complete, place the running boards on the base brackets, aligning the T-Bolts with the slots in the bracket.



8. SNUG THE BOLTS ATTACHING THE RUNNING BOARDS TO THE BRACKETS.

With the running board placed on all the cab brackets secure the running boards to the brackets. Slide the running board to the outside of the vehicle for now. Once the board has been pivoted in to place and tightened they can be readjusted.



9. PIVOT THE RUNNING BOARD INTO PLACE.

With the running board tightened to the base brackets, pivot the running board upward by pushing up on the running board until the holes are aligned and insert the supplied M8X20 bolts and flange nuts.

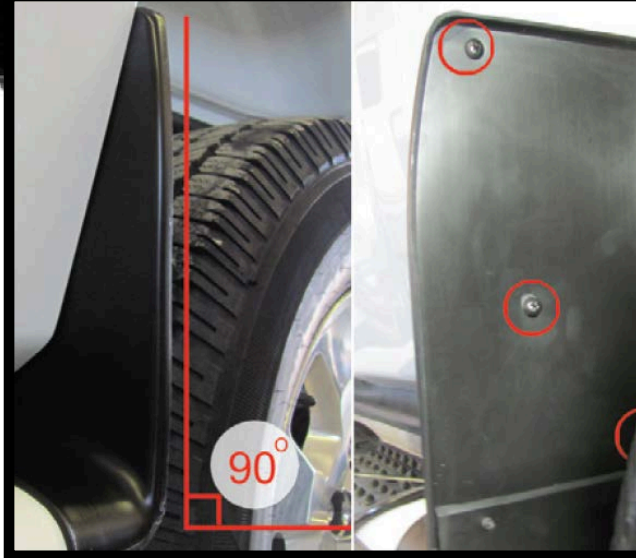


10. TIGHTEN THE BASE BRACKETS TO THE CAB BRACKETS.

Tighten the base bracket to the cab brackets.

If any adjustments need to be made inward or outward they can be done now.

Take a minute to ensure all the brackets are in line and the running boards are not distorted in any way. If any adjustment is needed, loosen one bracket at a time until the issue is corrected.



**11. SECURE THE MUD GUARDS TO THE
WHEEL WELL OF THE VEHICLE.**

Remove the protective cardboard from the rear mud-flaps.
Align the mud flaps so the straight edge is at 90 degrees to the ground or in line with the rear wheels. Fasten the mud-flaps using the supplied SS self drilling screws.

THE INSTALL SHOULD NOW BE COMPLETE.

***PLEASE PASS THIS BOOKLET ON TO THE END USER AS IT
HAS INFORMATION ON MAINTENANCE AND WARRANTY.***

***FOR ANY TECHNICAL DIFFICULTIES PLEASE PHONE
EXCALIBUR TRUCK ACCESSORIES***

1403 995 1818



EXCALIBUR RUNNING BOARDS®

MAINTENANCE

To ensure your Excalibur Running Boards maintain their factory finish be sure to clean your running boards Regularly with soap and water. Avoid using soaps and chemicals with caustic soda in, such as engine cleaners. This may result in discoloring the finish. Also avoid using soaps, waxes or polishes with abrasive properties. For a long lasting finish, simply clean the running boards with soap and water and spray a film of tire shine or Furniture spray on to the boards, then remove with a soft cloth.

WARRANTY

Excalibur Truck Accessories LTD guarantees the original purchaser a 1 year warranty against manufacturer Defects, in workmanship and materials. The following terms and conditions apply to this warranty.

This warranty is only in effect to the original purchaser and shall not apply if the Excalibur Running Boards have been removed from the original vehicle which it was installed on. The product is void from any accident, improper installation, misuse, abuse or neglect or any use not intended for the purpose a vehicle protection shield or Running Boards. Modifications of any kind to the Excalibur Running Boards void all warranties. The original Purchaser may be required to return the defective merchandise, provide a photograph or provide the original Purchase receipt to the place of purchase or Excalibur Truck Accessories LTD.

This warranty covers the cost of the defective part(s) and not the costs of removal or installation, or incidental charges.

This warranty is limited to replacement of the actual product and carries NO cash value.

The warranty is limited to the actual purchase price of the product excluding, shipping costs and handling fees.

DISCLAIMER

The buyer assumes all risk and ability for the installation and use of the Excalibur Products. Excalibur Running Boards are designed to protect a vehicles exterior finish while providing a means to easy of entry and exit from a vehicle. Excalibur's Running Boards should not be relied upon as protection for the vehicle or its occupants in the vehicle. Excalibur Running Boards however have in some cases reduced accident damages to the vehicle. Thank you for choosing excalibur running boards

108 Fisher Street
Okotoks, Alberta
Canada T1S 1A5
+1 403 995 1818

BATCH#

EXCALIBUR RUNNING BOARDS ARE A PRODUCT
OF EXCALIBUR TRUCK ACCESSORIES LTD.
ALL RIGHTS RESERVED.
PATENT PENDING.

www.excaliburtruck.ca



EXCALIBUR

TRUCK ACCESSORIES

**THANK YOU FOR PURCHASING EXCALIBUR
RUNNING BOARDS.**

**FOR REPLACEMENT PARTS PLEASE
CONTACT US DIRECTLY**

1403 995 1818

