



EXCALIBUR

TRUCK ACCESSORIES

GMC/CHEV GAS/DIESEL

2007-2018 1500

2007-2019 2500/3500

INSTALLATION GUIDE

EXCALIBUR TRUCK ACCESSORIES
108 FISHER ST OKOTOKS AB

TECH SUPPORT 1 (403) 995 1818

**PROUDLY
CANADIAN**



EXCALIBURTRUCK.CA

TOOLS REQUIRED

10mm Socket or Combination Wrench

13mm Socket
13mm Combination Wrench

9mm Drill bit

Permanent Marker

Box Cutter or Sharp Knife

OPTIONAL: Wax based under coating to cover brackets and hardware at the end of the install.

NOTE : A POWER DRILL OR POWER DRIVE WILL SPEED UP THE INSTALLATION. **PLEASE NOTE: IF POWER TOOLS ARE USED, TAKE CARE TO ENSURE NOT TO STRIP OR OVER TIGHTEN THE HARDWARE.**

PARTS LIST

QTY	DESCRIPTION
2	Running Boards
2	Mud guards
1	Cab Bracket Kit
1	Rear Bracket Kit
1	DPF Tank Bracket Kit (if applicable)
1	Light Kit (if applicable)



1. ASSEMBLE THE RUNNING BOARDS.

Install the mud guards on the running boards prior to installation.

Locate and identify the left and right mud guard.



2. PUSH THE MUD GUARDS ON TO THE RUNNING BOARDS

Push the mud guards on to the running boards until they bottom out and secure using the hardware located at the rear of the running board.



3. SECURE RUBBER FILLER STRIP TO THE MUD GUARDS.

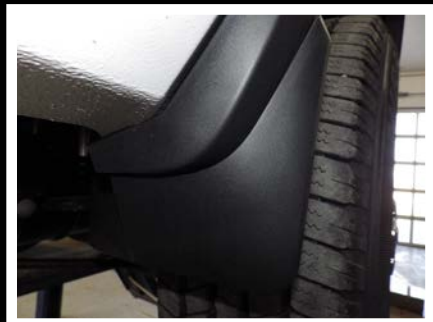
Using the pre installed SS self taper secure the rubber filler strip to the mud guards.



4. SACRIFICIAL CARDBOARD

We have installed a sacrificial piece of cardboard on the mud guards. The intention is to prevent scratches during install. Leave this in place until the installation is complete and you are ready to secure the mud guards.

**FOR VEHICLES EQUIPPED WITH
FACTORY REAR DIFFUSERS.
PLEASE FOLLOW THE
FOLLOWING STEPS FOR
REMOVAL.**

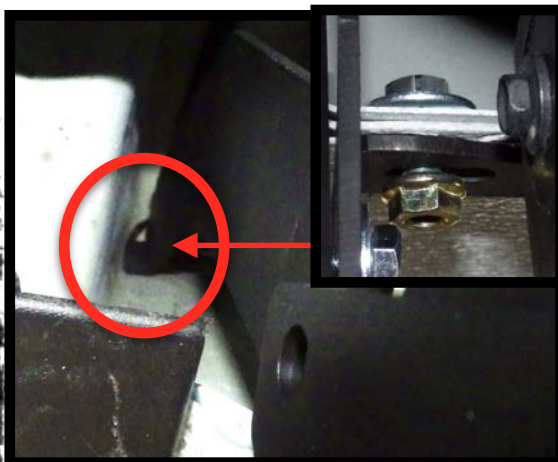
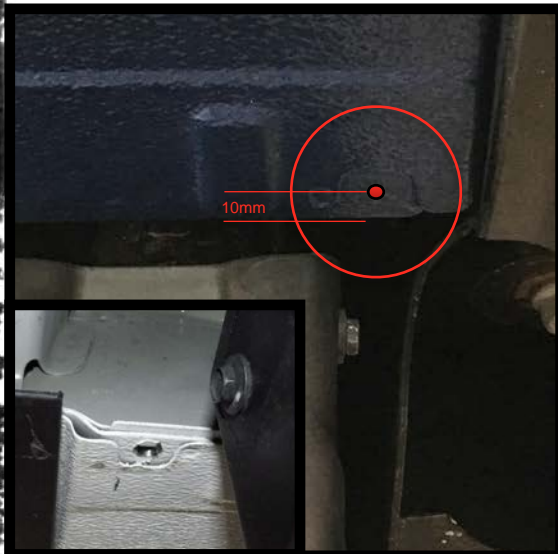


DIFFUSER REMOVAL

Using a T15 torques bit
remove the 4 screws holding
the diffuser to the fender.

The diffuser can be removed
by firmly pushing it towards the
inside of the vehicle.

With the diffuser removed
reinstall the hardware holding
the wheel well liner in place.



1. DRILL A 9MM HOLE (DPF TANK ONLY)

PASSENGER SIDE

On the passenger side behind the
front wheel you will notice a U
shaped indent in the sill.
Drill a 9mm hole in the center of
the U shaped indent.

For vehicles without a tank, the
first bracket will be mounted in
the forward most factory
mounting location.

**IF YOUR VEHICLE DOES NOT
HAVE A DPF TANK DO NOT
DRILL THIS HOLE.**

2. PASSENGER SIDE FRONT UREA BRACKET

The hook on the top section of the
bracket is designed to fit in the
opening located at the top of the
body reinforcement. As seen on
the left.

Insert the supplied M8X20mm bolt
and washer from the top down,
fasten the bolt using a M8 flange
nut. DO NOT TIGHTEN AT THIS
TIME.

3. SECOND UREA BRACKET

The second bracket is mounted
on the factory mounting location
located to the rear of the second
body mount (behind the urea
tank)

Mount the bracket using the
supplied M8X20 bolt and flat
washer. Thread a bolt into the
factory threaded mounts using a
flat washer.

**ON TRUCKS WITHOUT A DPF
TANK THIS BRACKET WOULD
BE LOCATED IN FRONT OF
THE SECOND BODY MOUNT.**

4. FACTORY MOUNTING POINTS

Located on the sill of the truck
there are two types of mounting
locations. One will require the
installation of a threaded U-clip

**SEE IMAGE ON THE LEFT FOR
INSTALLATION OF U-CLIP.**



5. INSTALL THE REMAINING CAB BRACKETS.

Complete the installation of the driver side and passenger side brackets. Use the same hardware order as the first two brackets. (bolt-washer-flange nut from the top down)



6. ALLOW THE BOTTOM SECTION OF THE CAB BRACKETS TO "PIVOT".

Leave the bottom section of the brackets loose and with only the hardware that came pre installed. This will allow the bracket to "pivot" after the running board has been placed on the brackets. This method will speed up the install greatly.



7. TIGHTEN THE TOP SECTION OF THE CAB BRACKETS TO THE TRUCK.

Push up on the bracket and ensure the bottom tab is fully contacting the sill of the truck. (2)

Tighten the bolts starting with the upper bolt. (1) and lastly the bottom bolt (2).



8. TIGHTEN THE BOLT SECURING THE DPF BRACKET AT THIS TIME.

Once the brackets are tightened time should be taken to ensure all the brackets are sitting at the same height. This can simply be done by looking down the side of the truck.

TAKING THE TIME TO ENSURE THE BRACKETS ARE ALL THE SAME HEIGHT WILL GREATLY IMPROVE THE OVERALL QUALITY OF THE INSTALL AND ENSURE THE RUNNING BOARDS ARE NOT DEFORMED BY A POORLY INSTALLED BRACKET.

PLEASE NOTE: THIS SET OF REAR BRACKET INSTALLATION INSTRUCTIONS ONLY APPLIES TO 6.6 BOX AND DUALY APPLICATIONS. IF THIS VEHICLE HAS A SINGLE REAR WHEEL AXLE AND A 8.0 BOX PLEASE REFER TO THE NEXT SET OF REAR BRACKET INSTRUCTIONS.

TOOLS REQUIRED

10mm Socket or Combination Wrench

13mm Socket

13mm Combination Wrench

13mm Socket

18mm Socket

PARTS LIST

QTY	DESCRIPTION
1	Passenger Rear Bracket
1	Driver Rear Bracket
1	Left Base Bracket
1	Right Base Bracket

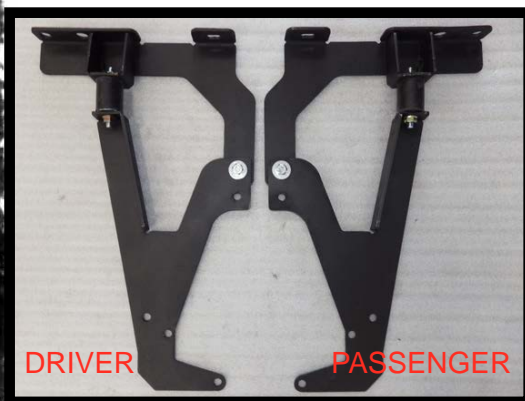
6.6 AND DUALY REAR BOX MOUNTED BRACKET INSTALL.



1. LOCATE THE FACTORY MOUNTING LOCATIONS.

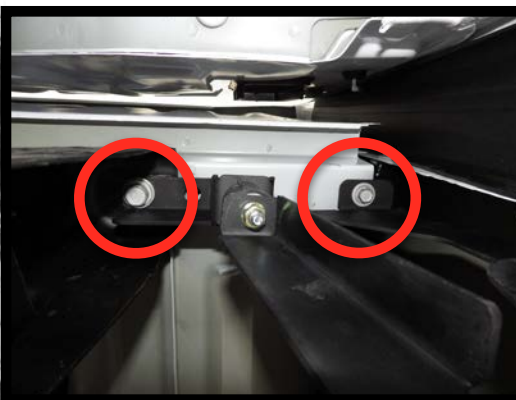
Located on the driver and passenger side there are box mounting locations. Locate the box mounts towards the front of the box (closest to the cab).

Using a 13mm and 18mm socket remover the factory hardware shown in the picture on the left. Keep the hardware as it will be reinstalled.



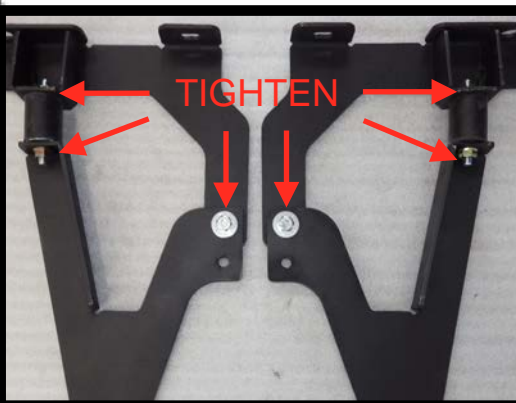
2. IDENTIFY DRIVER AND PASSENGER REAR BRACKETS.

Holding the two brackets as shown in the picture on the left identify the driver side and passenger side rear brackets.



3. REINSTALL FACTORY HARDWARE.

Holding the bracket in place, reinstall the factory hardware and tighten.



4. TIGHTEN UPPER SECTION OF REAR BRACKET.

If not already done tighten the upper section of the rear bracket using a set of 13mm wrenches.

PLEASE NOTE: THIS SET OF REAR BRACKET INSTALLATION INSTRUCTIONS ONLY APPLIES TO VEHICLES WITH 8.0' BOXES WITH SINGLE REAR WHEELS.

8.0 SINGLE REAR WHEEL REAR BRACKET

TOOLS REQUIRED

10mm Socket or Combination Wrench

13mm Socket

13mm Combination Wrench

18mm Socket

PARTS LIST

QTY	DESCRIPTION
1	Passenger Rear Bracket
1	Driver Rear Bracket
1	Left Base Bracket
1	Right Base Bracket

1. LOCATE THE FACTORY MOUNTING LOCATIONS.



Located on the driver and passenger side there are box mounting locations. Locate the box mounts towards the rear of the box (closest to the axle).

Using a 18mm socket remove the box mounting bolt. Keep the bolt as it is used to install the rear bracket.

2. INSERT THE BLIND FASTENERS.



Using the factory opening in the rear crossmember, as shown in the top right picture on the left, insert the supplied M8 blind faster and locate it in the hole towards the outside of the crossmember.

3. INSTALL THE REAR BRACKETS.



Using a supplied M8 flange nut and the factory box mount bolt mount and tighten the rear bracket to the vehicle.

4. TIGHTEN ALL THE HARDWARE EXCEPT FOR THE BASE BRACKET AT THIS TIME.



Ensure all the hardware on the top of the rear brackets are tight. The only hardware loose at this time should be the base bracket.

TIP: There is supposed to be a gap between the upper section of the bracket and the mid section where the rubber mount is located. This is to allow for box twist while providing a physical stop when weight is applied to the boards.



9. PLACE THE RUNNING BOARDS ON THE BRACKETS.

With the brackets tight, align the T bolts (seen in picture above) with the slots in the bracket and let the board rest on the brackets.



10. THREAD THE SUPPLIED M6 FLANGE NUTS ON THE T BOLTS.

Using the supplied M6 flange nuts, secure the boards to the brackets. Do not fully tighten the T bolts at this time as the board will likely need to be adjusted.



11. PUSH UP ON THE BOARDS AND INSERT REMAINING HARDWARE.

Use assistance if required. Push up on the running boards allowing them to “pivot” into place and install the remaining hardware.

With all the hardware installed in the brackets, tighten the hardware.

The “pivot” action simplifies the installation by aiding in the placement of the running boards on the brackets.



12. TIGHTEN THE M6 FLANGE NUTS AND CHECK THE ALIGNMENT OF THE REAR BRACKET.

With all the bracket hardware tight, tighten the M6 flange nut securing the boards to the brackets.

With the hardware tight, ensure the rear bracket is correctly aligned. This can easily be done by looking down the running board. It should be perfectly straight and not “bowing”. If the rear bracket needs adjustment, this can be done by using the slots in the rear bracket. These slots were intended to allow for vertical adjustment.



EXCALIBUR RUNNING BOARDS®

MAINTENANCE

To ensure your Excalibur Running Boards maintain their factory finish be sure to clean your running boards Regularly with soap and water. Avoid using soaps and chemicals with caustic soda in, such as engine cleaners. This may result in discoloring the finish. Also avoid using soaps, waxes or polishes with abrasive properties. For a long lasting finish, simply clean the running boards with soap and water and spray a film of tire shine or Furniture spray on to the boards, then remove with a soft cloth.

WARRANTY

Excalibur Truck Accessories LTD guarantees the original purchaser a 1 year warranty against manufacturer Defects, in workmanship and materials. The following terms and conditions apply to this warranty.

This warranty is only in effect to the original purchaser and shall not apply if the Excalibur Running Boards have been removed from the original vehicle which it was installed on. The product is void from any accident, improper installation, misuse, abuse or neglect or any use not intended for the purpose a vehicle protection shield or Running Boards. Modifications of any kind to the Excalibur Running Boards void all warranties. The original Purchaser may be required to return the defective merchandise, provide a photograph or provide the original Purchase receipt to the place of purchase or Excalibur Truck Accessories LTD.

This warranty covers the cost of the defective part(s) and not the costs of removal or installation, or incidental charges.

This warranty is limited to replacement of the actual product and carries NO cash value.

The warranty is limited to the actual purchase price of the product excluding, shipping costs and handling fees.

DISCLAIMER

The buyer assumes all risk and ability for the installation and use of the Excalibur Products. Excalibur Running Boards are designed to protect a vehicles exterior finish while providing a means to easy of entry and exit from a vehicle. Excalibur's Running Boards should not be relied upon as protection for the vehicle or its occupants in the vehicle. Excalibur Running Boards however have in some cases reduced accident damages to the vehicle.

Thank you for choosing excalibur running boards

108 Fisher Street
Okotoks, Alberta
Canada T1S 1A5
+1 403 995 1818

BATCH#

EXCALIBUR RUNNING BOARDS ARE A PRODUCT
OF EXCALIBUR TRUCK ACCESSORIES LTD.
ALL RIGHTS RESERVED.
PATENT PENDING.

