



EXCALIBUR

TRUCK ACCESSORIES

2020+ GMC/CHEV 2500/3500

2019+ GMC/CHEV 1500

RUNNING BOARD INSTALLATION GUIDE

EXCALIBUR TRUCK ACCESSORIES
108 FISHER ST OKOTOKS AB

TECH SUPPORT 1 (403) 995 1818

**IF YOU HAVE ANY
QUESTIONS PLEASE GIVE US A CALL.**

**PROUDLY
CANADIAN**



EXCALIBURTRUCK.CA

TOOLS REQUIRED

10mm Socket or Combination Wrench

13mm Socket
13mm Combination Wrench

9mm Drill bit

Permanent Marker

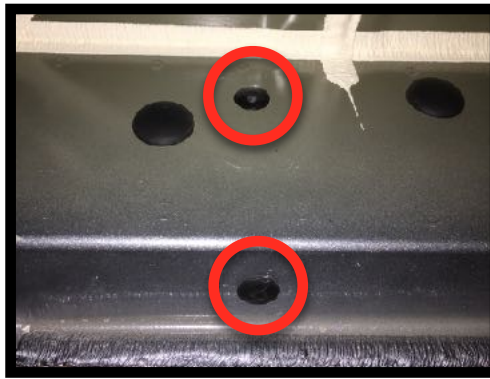
Box Cutter or Sharp Knife

OPTIONAL: Wax based under coating to cover brackets and hardware at the end of the install.

NOTE : A POWER DRILL OR POWER DRIVE WILL SPEED UP THE INSTALLATION. **PLEASE NOTE: IF POWER TOOLS ARE USED, TAKE CARE TO ENSURE NOT TO STRIP OR OVER TIGHTEN THE HARDWARE.**

PARTS LIST

QTY	DESCRIPTION
2	Running Boards
1	Cab Bracket Kit
1	Rear Bracket Kit
1	DPF Tank Bracket Kit (if applicable)
1	Light Kit (if applicable)



1. LOCATE THE FACTORY MOUNTING LOCATIONS.

New to the 2019+ GMC/CHEV is a factory threaded mounting location. There are four mounting locations on the cab, on the driver and passenger side of the vehicle.



2. REMOVE THE PLUGS LOCATED IN THE FACTORY MOUNTING LOCATIONS

Using a suitable tool, remove the two black plugs located in each factory mounting locations.

The plugs you want to remove are the two smaller ones, not the larger.



3. MOUNT THE CAB BRACKETS TO THE VEHICLE.

Using the supplied M8X20 bolts and washers, mount the cab brackets to each of the cab mounting locations.

LEFT OR RIGHT? A rule of thumb is to place the body of the bracket towards the front of the vehicle and have the mounting tabs with the bolts towards the rear of the vehicle. (SEE LEFT)



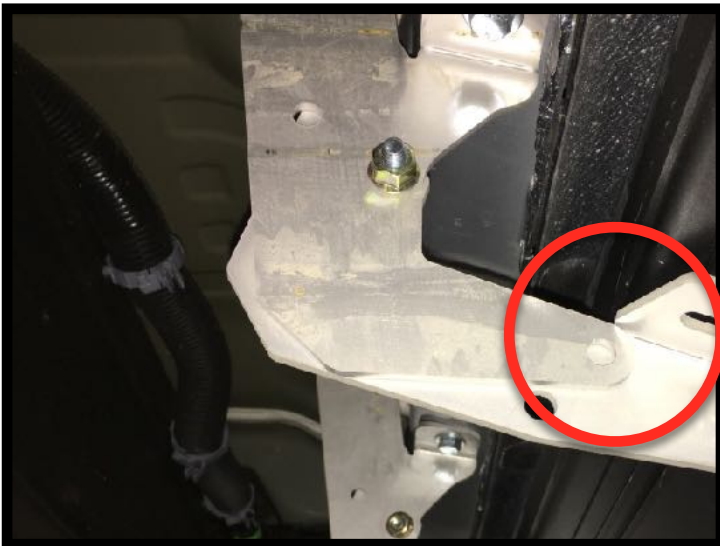
4. TIGHTEN THE CAB MOUNT HARDWARE.

Ensure the cab brackets are sitting flat against the sill of the vehicle. Tighten the hardware using a 13mm socket.



5. INSTALL THE BASE BRACKETS TO THE CAB BRACKETS

Using the supplied M8X20mm bolts and gold flange nuts, loosely install the base brackets to the cab brackets using the centre bolt hole.



6. ALLOW THE BASE BRACKETS TO PIVOT.

By using the centre hole, the base bracket will pivot and tilt towards the outside of the vehicle. (AS SEEN ON THE LEFT).

By allowing the bracket to pivot, it will assist in installing the running board on the brackets until all the base brackets are attached to the running board.

SEE REAR BRACKET INSTALLATION PRIOR TO PLACING RUNNING BOARDS ON BASE BRACKETS.

PLEASE NOTE:
THIS SET OF REAR
BRACKET
INSTALLATION
INSTRUCTIONS
APPLIES TO 2019+1500
6.6' BOX ONLY.

1500 ONLY 6.6' REAR BOX MOUNTED BRACKET



1. LOCATE THE FACTORY MOUNTING LOCATIONS.

Located on the driver and passenger side there are box mounting locations. Locate the box mounts towards the front of the box (closest to the cab).

Using a 13mm and 18mm socket remove the factory hardware shown in the picture on the left. Keep the hardware as it will be reinstalled.



2. IDENTIFY DRIVER AND PASSENGER REAR BRACKETS.

Holding the two brackets as shown in the picture on the left identify the driver side and passenger side rear brackets.



3. REINSTALL FACTORY HARDWARE.

Holding the bracket in place, reinstall the factory hardware and tighten.



4. TIGHTEN UPPER SECTION OF REAR BRACKET.

If not already done, tighten the upper section of the rear bracket

The outer mounting location must be secured with a M8X20mm bolt and Nylock nut. This is a pivot point for the rear bracket. Using a flanged nut here will result in the bolt coming loose from movement.

TOOLS REQUIRED

10mm Socket or Combination
Wrench

13mm Socket
13mm Combination Wrench
18mm Socket

PARTS LIST

QTY	DESCRIPTION
1	Passenger Rear Bracket
1	Driver Rear Bracket
1	Left Base Bracket
1	Right Base Bracket

PLEASE NOTE:
THIS SET OF REAR
BRACKET
INSTALLATION
INSTRUCTIONS
APPLIES TO 2020+ 6.6'
BOX WITH BOX STEP.

TOOLS REQUIRED

10mm Socket or Combination
Wrench

13mm Socket
13mm Combination Wrench

PARTS LIST

QTY	DESCRIPTION
1	Passenger Rear Bracket
1	Driver Rear Bracket
1	Left Base Bracket
1	Right Base Bracket

2500/3500 HD 6.6' & DUALLY REAR BOX MOUNTED BRACKET.



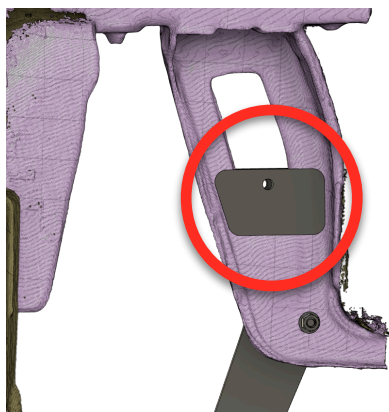
1. LOCATE THE FACTORY MOUNTING LOCATIONS.

Located on the driver and passenger side there are box mounting locations. Locate the box mounts towards the front of the box (closest to the cab).



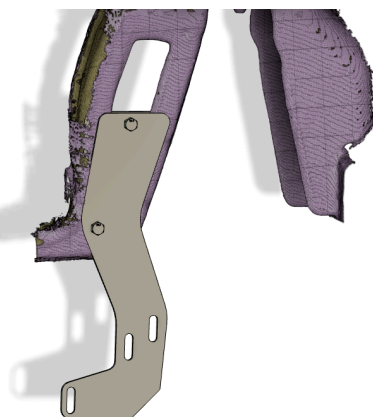
2.BOLT THE REAR SUPPORT BRACKET TO THE FACTORY REAR BOX STEP BRACKET.

Using the supplied M8X25mm bolt and flange nut secure the rear support bracket in the factory hole located at the bottom of the factory box step bracket, shown on the left.



3.MOUNT THE UPPER ALIGNMENT BRACKET

Using the supplied M8x25mm Bolt and flange nut mount the alignment plate to the support bracket clamping the factory bracket between the alignment bracket and the support bracket. See 3D Rendering on the left for alignment.



4. REPEAT INSTALL ON DRIVER SIDE.

Tighten all the hardware on the support bracket and repeat the install on the driver side.

Note all renderings we shown as passenger side.

PLEASE NOTE:
THIS SET OF REAR
BRACKET
INSTALLATION
INSTRUCTIONS
APPLIES TO 2020+ 8'
BOX WITH BOX STEP.

TOOLS REQUIRED

10mm Socket or Combination
Wrench

13mm Socket
13mm Combination Wrench
18mm Socket
Ratchet

PARTS LIST

QTY	DESCRIPTION
1	Passenger Rear Bracket
1	Driver Rear Bracket
1	Left Base Bracket
1	Right Base Bracket

2500/3500 HD **8'** REAR BOX MOUNTED BRACKET.



1. LOCATE THE FACTORY MOUNTING LOCATIONS.

Located on the driver and passenger side there are box mounting locations. The Excalibur rear bracket will be bolted to the same mount as the factory installed box step located towards the rear of the truck. Shown in the image on



2. REMOVE MOUNTING HARDWARE.

Using a 13mm socket remove the two bolts securing the rear portion of the factory installed step.

Use a 18mm socket to remove the bed mount bolt shown on the left



3. MOUNT THE UPPER SUPPORT BRACKETS TO THE STEP MOUNT

Pull down on the factory step slightly to allow enough space to slide the rear support bracket into place. Secure using factory hardware.



4. SECURE THE REAR BRACKET TO THE BOX CROSSMEMBER

Using the factory box mount bolt and a supplied M8 flange nut secure the top of the bracket to the box crossmember and upper support bracket.

4. REPEAT INSTALL ON DRIVER SIDE.

Tighten all the hardware on the rear bracket except for the base bracket. It can be removed temporarily until the running board is mounted to the cab brackets this will make mounting easier.

Note: all pictures shown are passenger side.



www.excaliburtruck.ca



7. PLACE THE RUNNING BOARDS ON THE BRACKETS.

With the brackets tight, align the T bolts (seen in picture above) with the slots in the bracket and let the board rest on the brackets.



8. THREAD THE SUPPLIED M6 FLANGE NUTS ON THE T BOLTS.

Using the supplied M6 flange nuts, secure the boards to the brackets. Do not fully tighten the T bolts at this time as the board will likely need to be adjusted.

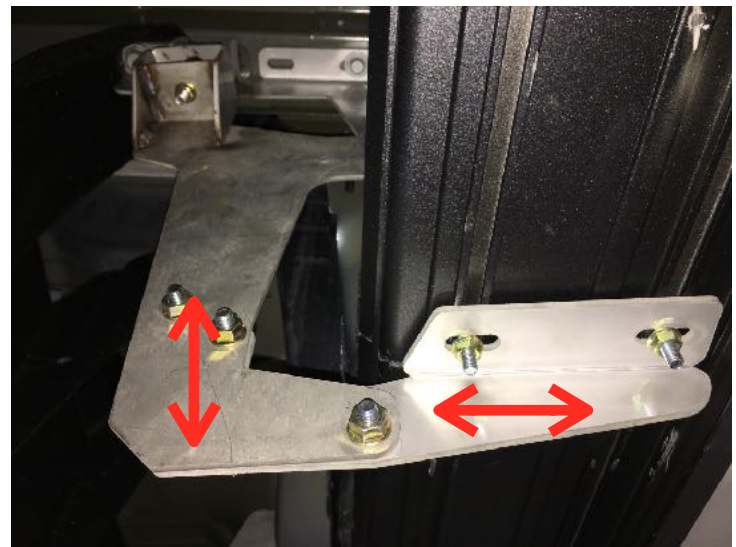


9. PUSH UP ON THE BOARDS AND INSERT REMAINING HARDWARE.

Use assistance if required. Push up on the running boards allowing them to “pivot” into place and install the remaining hardware.

With all the hardware installed in the brackets, tighten the hardware.

The “pivot” action simplifies the installation by aiding in the placement of the running boards on the brackets.



10. TIGHTEN THE M6 FLANGE NUTS AND CHECK THE ALIGNMENT OF THE REAR BRACKET.

With all the bracket hardware tight, tighten the M6 flange nut securing the boards to the brackets.

With the hardware tight, ensure the rear bracket is correctly aligned. This can easily be done by looking down the running board. It should be perfectly straight and not “bowing”. If the rear bracket needs adjustment, this can be done by using the slots in the rear bracket. These slots were intended to allow for vertical adjustment.



2019+ GMC AND CHEV VEHICLES WILL NOT COME WITH A FITTED REAR MUDGUARD FOR THE EXCALIBUR RUNNING BOARDS.

GM has put a hole in the side of the fender on the 2019+ models to hold the rear tire aero diffuser in place. For this reason Excalibur boards will not come with the fitted rear mud guard.





EXCALIBUR RUNNING BOARDS®

MAINTENANCE

To ensure your Excalibur Running Boards maintain their factory finish be sure to clean your running boards Regularly with soap and water. Avoid using soaps and chemicals with caustic soda in, such as engine cleaners. This may result in discoloring the finish. Also avoid using soaps, waxes or polishes with abrasive properties. For a long lasting finish, simply clean the running boards with soap and water and spray a film of tire shine or Furniture spray on to the boards, then remove with a soft cloth.

WARHANTY

Excalibur Truck Accessories LTD guarantees the original purchaser a 1 year warranty against manufacturer Defects, in workmanship and materials. The following terms and conditions apply to this warranty.

This warranty is only in effect to the original purchaser and shall not apply if the Excalibur Running Boards have been removed from the original vehicle which it was installed on. The product is void from any accident, improper installation, misuse, abuse or neglect or any use not intended for the purpose a vehicle protection shield or Running Boards. Modifications of any kind to the Excalibur Running Boards void all warranties. The original Purchaser may be required to return the defective merchandise, provide a photograph or provide the original Purchase receipt to the place of purchase or Excalibur Truck Accessories LTD.

This warranty covers the cost of the defective part(s) and not the costs of removal or installation, or incidental charges.

This warranty is limited to replacement of the actual product and carries NO cash value.

The warranty is limited to the actual purchase price of the product excluding, shipping costs and handling fees.

DISCLAIMER

The buyer assumes all risk and ability for the installation and use of the Excalibur Products. Excalibur Running Boards are designed to protect a vehicles exterior finish while providing a means to easy of entry and exit from a vehicle. Excalibur's Running Boards should not be relied upon as protection for the vehicle or its occupants in the vehicle. Excalibur Running Boards however have in some cases reduced accident damages to the vehicle.

Thank you for choosing excalibur running boards

108 Fisher Street
Okotoks, Alberta
Canada T1S 1A5
+1 403 995 1818

BATCH#

EXCALIBUR RUNNING BOARDS ARE A PRODUCT
OF EXCALIBUR TRUCK ACCESSORIES LTD.
ALL RIGHTS RESERVED.
PATENT PENDING.



THE INSTALL SHOULD NOW BE COMPLETE.

**PLEASE PASS THIS BOOKLET ON TO THE END USER AS IT
HAS INFORMATION ON MAINTENANCE AND WARRANTY.**

**FOR ANY TECHNICAL DIFFICULTIES PLEASE PHONE
EXCALIBUR TRUCK ACCESSORIES**

1403 995 1818